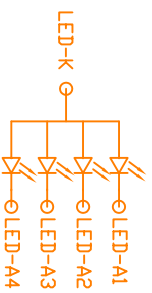
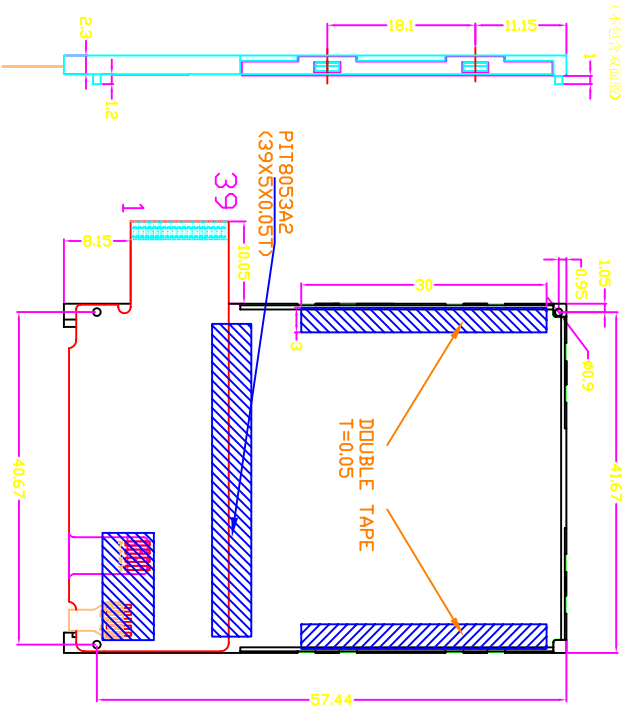
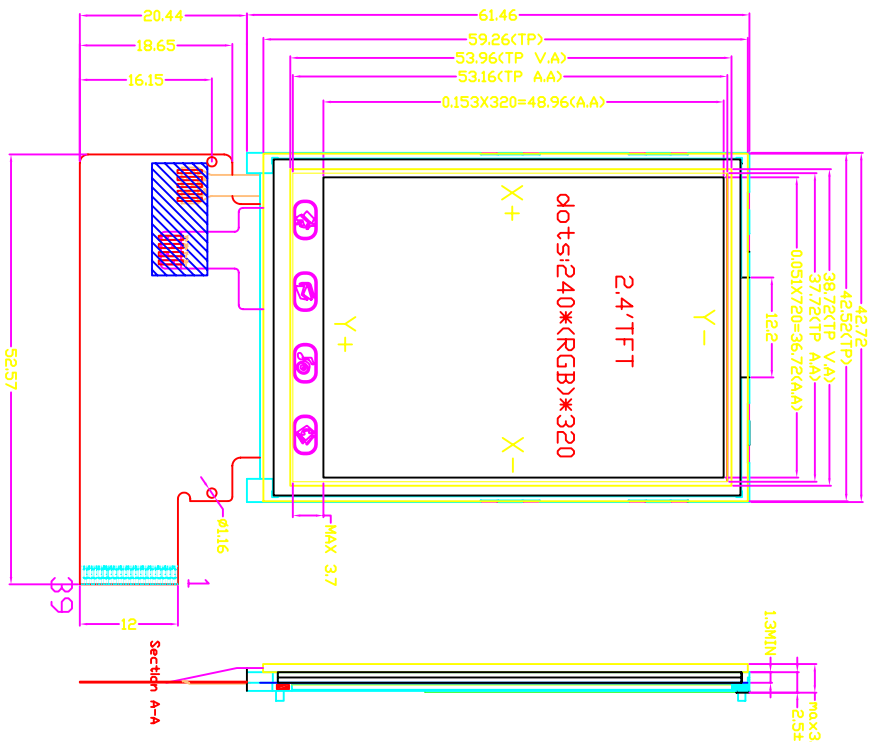


REV 版本	DESCRIPTION 描述	DATE 日期
V1	First Issue	May-01-2005



背光电路图

39PIN DESCRIPTION

1	GROUND
2	CS MAIN
3	RS
4	WR
5	RD
6	DB00
7	DB01
8	DB02
9	DB03
10	DB04
11	DB05
12	DB06
13	DB07
14	DB08
15	DB09
16	DB10
17	DB11
18	DB12
19	DB13
20	DB14
21	DB15
22	DB16
23	DB17
24	RESET
25	BWST
26	DTXT1
27	GROUND
28	X+
29	Y+
30	X-
31	Y-
32	GROUND
33	VDD1
34	VDD2
35	LEDD+
36	LEDD+
37	LEDD+
38	LEDD+
39	LEDD-

- Specification:
- 1). Display mode: 262K/65K TFT/Normal White/Transmissive
 - 2). Viewing angle: 12 0'clock
 - 3). Operating temp.: -10°C~+60°C
Storage temp.: -20°C~+70°C
 - 4). IC: IL9320
 - 5). Backlight: 4 chip White LED, in Parallel;15mA
 - 6). LCM Brightness: 200Cd/m²
 - 7). Connector: HRS FH26-39S-0.3SHW

SCALE: FIT

SHEET: 1 OF 1

GENERAL TOL: ±0.3 UNIT: mm

APPROVALS

APP: APP	DATE	MODEL NUMBER	PROJECTION	PART NO: C/D
CHK: CHK	CHK DATA			
DWN: DWN	DWN DATA			

DO NOT SCALE THIS DRAWING.

WIN STAC 威世达
微视显示器科技 (深圳) 有限公司
CRYSTAL COMPANY LTD.